



# Plan 3006

Total Living: 3,006 sf,

Bedrooms: 5 with full guest suite on main

Bathrooms: 2.75

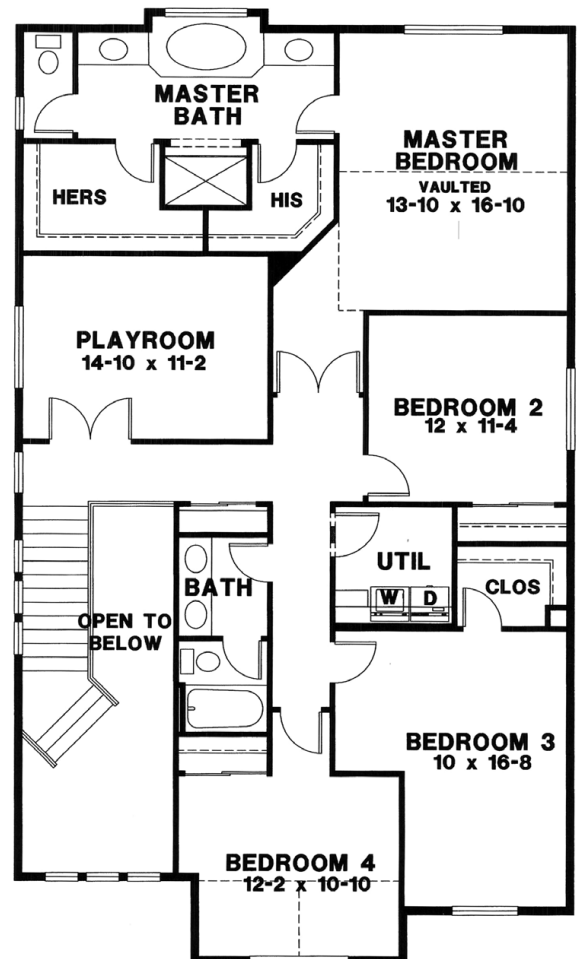
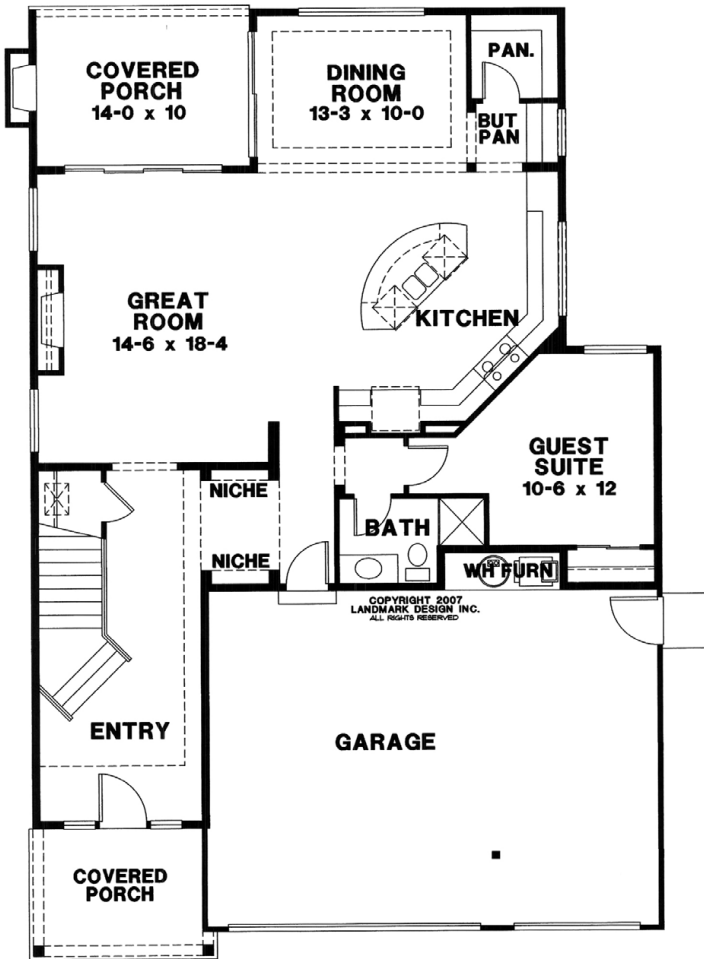
Additional Highlights: Playroom & covered back patio

Garage: 3-Car



MAIN LEVEL

UPPER LEVEL



Note: Continuing a policy for constant improvement, builder reserves the right to change features, brand names, dimensions, architectural details and designs. This brochure is for illustrative purposes and drawings are not to scale. This is not part of a legal contract. Prices are subject to change without notice.